

(Mouse) Srf Antibody (C-term)
Purified Rabbit Polyclonal Antibody (Pab)
Catalog # AP20866c

Specification

(Mouse) Srf Antibody (C-term) - Product Information

Application	WB,E
Primary Accession	O9JM73
Reactivity	Mouse, Rat
Host	Rabbit
Clonality	Polyclonal
Isotype	Rabbit IgG
Calculated MW	51247

(Mouse) Srf Antibody (C-term) - Additional Information

Gene ID 20807

Other Names

Serum response factor, SRF, Srf

Target/Specificity

This (Mouse) Srf antibody is generated from a rabbit immunized with a KLH conjugated synthetic peptide between 489-524 amino acids from the C-terminal region of human (Mouse) Srf.

Dilution

WB~~1:1000

E~~Use at an assay dependent concentration.

Format

Purified polyclonal antibody supplied in PBS with 0.09% (W/V) sodium azide. This antibody is purified through a protein A column, followed by peptide affinity purification.

Storage

Maintain refrigerated at 2-8°C for up to 2 weeks. For long term storage store at -20°C in small aliquots to prevent freeze-thaw cycles.

Precautions

(Mouse) Srf Antibody (C-term) is for research use only and not for use in diagnostic or therapeutic procedures.

(Mouse) Srf Antibody (C-term) - Protein Information

Name Srf

Function SRF is a transcription factor that binds to the serum response element (SRE), a short sequence of dyad symmetry located 300 bp to the 5' of the site of transcription initiation of some genes (such as FOS) (PubMed:[24732378](#)). Together with MRTFA transcription coactivator, controls

expression of genes regulating the cytoskeleton during development, morphogenesis and cell migration (PubMed:[12732141](#), PubMed:[19350017](#), PubMed:[24732378](#)). The SRF-MRTFA complex activity responds to Rho GTPase-induced changes in cellular globular actin (G- actin) concentration, thereby coupling cytoskeletal gene expression to cytoskeletal dynamics (PubMed:[24732378](#)). Required for cardiac differentiation and maturation (PubMed:[15169892](#)).

Cellular Location

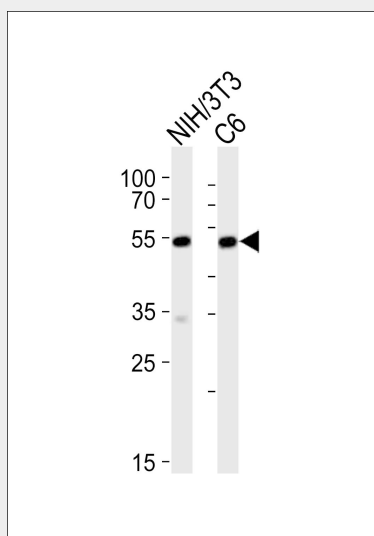
Nucleus {ECO:0000255|PROSITE-ProRule:PRU00251, ECO:0000269|PubMed:19350017}

(Mouse) Srf Antibody (C-term) - Protocols

Provided below are standard protocols that you may find useful for product applications.

- [Western Blot](#)
- [Blocking Peptides](#)
- [Dot Blot](#)
- [Immunohistochemistry](#)
- [Immunofluorescence](#)
- [Immunoprecipitation](#)
- [Flow Cytometry](#)
- [Cell Culture](#)

(Mouse) Srf Antibody (C-term) - Images



Western blot analysis of lysates from mouse NIH/3T3;rat C6 cell line (from left to right), using Srf Antibody (C-term)(Cat. #AP20866c). AP20866c was diluted at 1:1000 at each lane. A goat anti-rabbit IgG H&L(HRP) at 1:10000 dilution was used as the secondary antibody. Lysates at 20ug per lane.

(Mouse) Srf Antibody (C-term) - Background

SRF is a transcription factor that binds to the serum response element (SRE), a short sequence of dyad symmetry located 300 bp to the 5' of the site of transcription initiation of some genes (such as FOS) (By similarity). Required for cardiac differentiation and maturation.

(Mouse) Srf Antibody (C-term) - References

Miwa T.,et al.Submitted (FEB-2000) to the EMBL/GenBank/DDBJ databases.
Zhang X.,et al.J. Biol. Chem. 279:55626-55632(2004).
Parlakian A.,et al.Mol. Cell. Biol. 24:5281-5289(2004).
Zhang X.,et al.Biochem. Biophys. Res. Commun. 346:794-801(2006).
Villen J.,et al.Proc. Natl. Acad. Sci. U.S.A. 104:1488-1493(2007).